

Additional Safety Weights with Wheels

Thank you very much for choosing a Sport-Thieme product!

Please read the instructions fully before you assemble the equipment, so you can enjoy the product and safety is guaranteed. We are happy to answer any questions you may have.



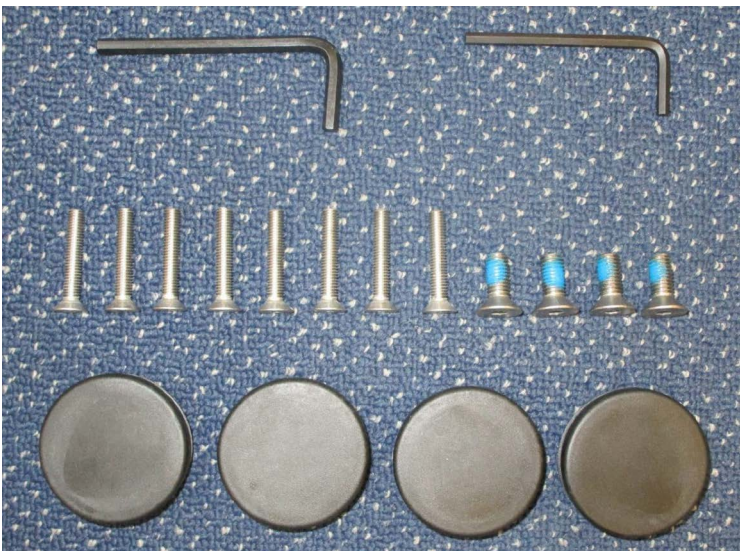
1. Scope of delivery

Please check the following content before assembly.



Content:

- 2x weight with handle and wheels
- 4x angle 1 (100 x 100 x 10 mm, length 80 mm)
- 4x angle 2 (100 x 100 x 10 mm, length 80 mm)
- 4x angle 3 (80 x 50 x 10 mm, length 80 mm)
- 4x angle 4 (80 x 60 x 10 mm, length 80 mm)
- 1x accessories



Accessories:

- 8x hexagonal screw DIN 7991, M6 x 35mm
- 4x safety hexagon socket screw DIN 7991, M8 x 20mm
- 4x cap, black Ø 50mm
- 1x hexagon screwdriver SW 4
- 1x hexagon screwdriver SW 5
- 1x assembly instruction

2. Preparation

- a) At first the weights have to be filled with quartz sand in two round holes which are provided on the upper side of each tank (each additional weight consists of a double tank). Use a funnel if necessary. To simplify filling we recommend to lift and shake the tank slightly. Fill the sand up to about 1 cm below the holes.



- b) Then you have to fill water into the tanks until the sand is saturated with water. Be careful to avoid the sand running off. Use a funnel if necessary.
- c) Now the tank can be completely filled with sand and water by turns.
- d) Then close the round holes with the enclosed caps. Use a mallet if necessary.



Assembly instructions for Art.-Nr. 242 1807

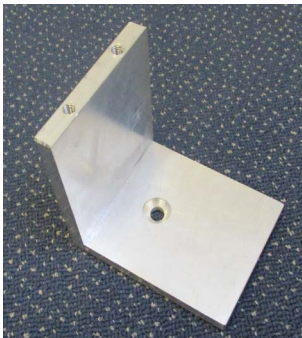
3. Difference of angles

The additional weights are available for three different ground frames:

- oval profile 120 x 100 mm
- square profile 80 x 80 mm
- rectangular profile 80 x 40 mm

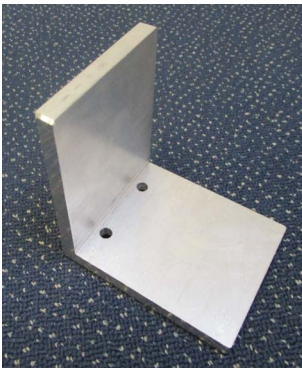
Therefore we deliver 4 x 4 different angles to be fixed at the goal. Details are described below.

Survey of the different angles:



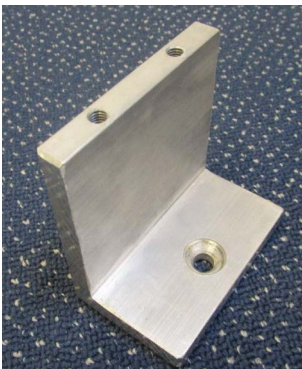
Angle 1
(100 x 100 x 10 mm)

....only to be used for goals with an oval ground frame 120 x 100 mm



Angle 2
(100 x 100 x 10 mm)

....only to be used for goals with an oval ground frame 120 x 100 mm



Angle 3
(80 x 50 x 10 mm)

....only to be used for goals with a square or flat rectangular ground frame 80 x 80 mm or 80 x 40 mm



Angle 4
(80 x 60 x 10 mm)

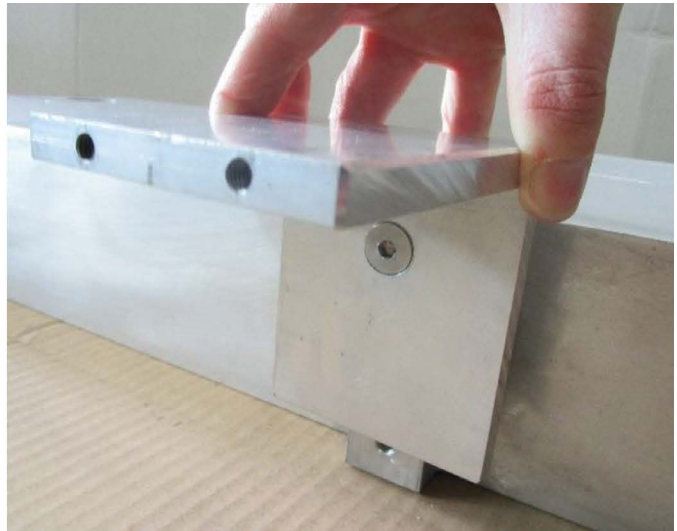
....only to be used for goals with a square or flat rectangular ground frame 80 x 80 mm or 80 x 40 mm

4. Fixing of angles at a goal with oval ground frame 120 x 100 mm

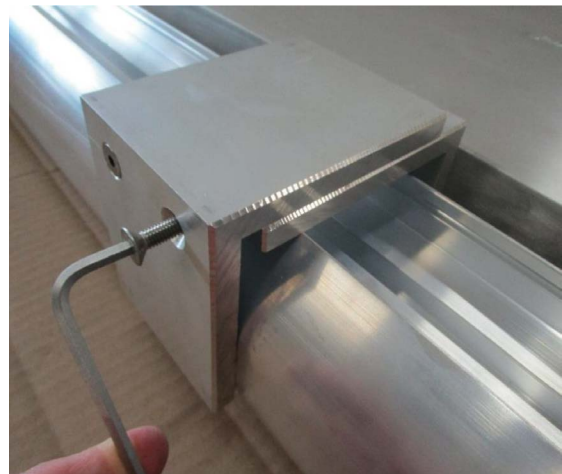
You need:

- 4 angles 1
- 4 angles 2
- 4 safety hexagon socket screws DIN 7991, M8 x 20
- 8 hexagon socket screws DIN 7991, M6 x 35

The following steps have to be done with all four fixing points of both additional weights:



- a) Fix angle 1 in the upper borehole of the additional weight with safety hexagon socket screw DIN 7991, M8 x 20 and tighten it.



- b) Now lay the weights with mounted angles down to the final positions of the ground tube. Both weights have to be distributed equally at the ground tube so that later a tipping over of the goal is excluded.

- c) Lay angle 2 on mounted angle 1 so that the holes are congruent at the narrow side. Screw and tighten hexagon socket screws DIN 7991, M6 x 35.

5. Fixing of angles at a goal with square ground frame 80 x 80 mm

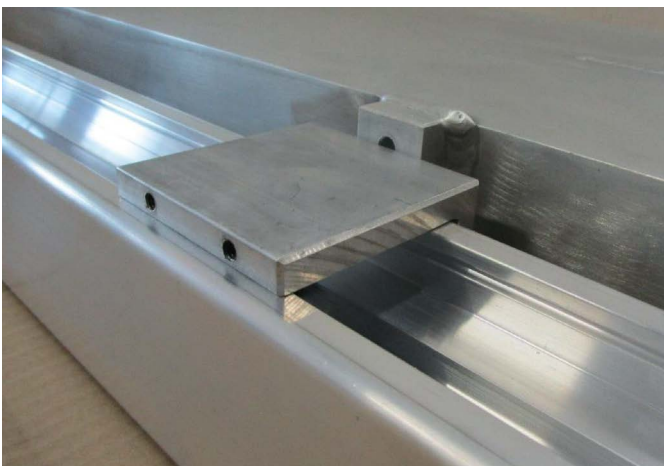
You need:

- 4 angles 3
- 4 angles 4
- 4 safety hexagon socket screws DIN 7991, M8 x 20
- 8 hexagon socket screws DIN 7991, M6 x 35

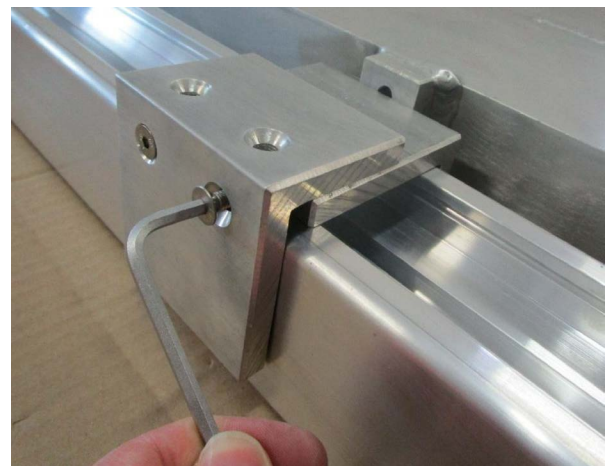
The following steps have to be done with all four fixing points of both additional weights:



- a) Fix angle 3 in the middle borehole of the additional weight with safety hexagon socket screw DIN 7991, M8 x 20 and tighten it.



- b) Now lay the weights with mounted angles down to the final positions of the ground tube. Both weights have to be distributed equally at the ground tube so that later a tipping over of the goal is excluded.



- c) Lay angle 4 with its short side on mounted angle 3 so that the holes are congruent at the narrow side. Screw and tighten hexagon socket screws DIN 7991, M6 x 35.

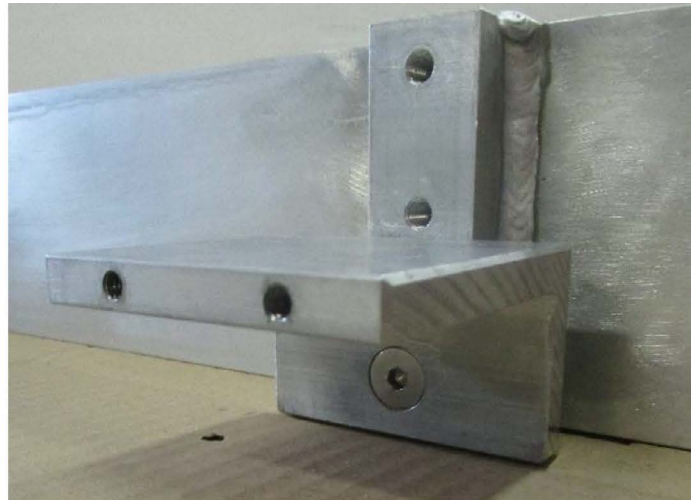
Assembly instructions for Art.-Nr. 242 1807

6. Fixing of angles at a goal with rectangular ground frame 80 x 40 mm

You need:

- 4 angles 3
- 4 angles 4
- 4 safety hexagon socket screws DIN 7991, M8 x 20
- 8 hexagon socket screws DIN 7991, M6 x 35

The following steps have to be done with all four fixing points of both additional weights:



- a) Fix angle 3 in the lower borehole of the additional weight with safety hexagon socket screw DIN 7991, M8 x 20 and tighten it.



- b) Now lay the weights with mounted angles down to the final positions of the ground tube. Both weights have to be distributed equally at the ground tube so that later a tipping over of the goal is excluded.

- c) Lay angle 4 with its long side on mounted angle 3 so that the holes are congruent at the narrow side. Screw and tighten hexagon socket screws DIN 7991, M6 x 35.



7. Maintenance and safety instructions



Check screwed fastenings regularly and change damaged and wearing parts if need be.

Notice: Due to our continuous quality check of products and equipment technical modifications are possible.

To avoid damage and misuse goals have to be stored secured and in an upright position when not in use.

Only use water for cleaning the surfaces. Do not use alcohol or any aggressive chemicals!