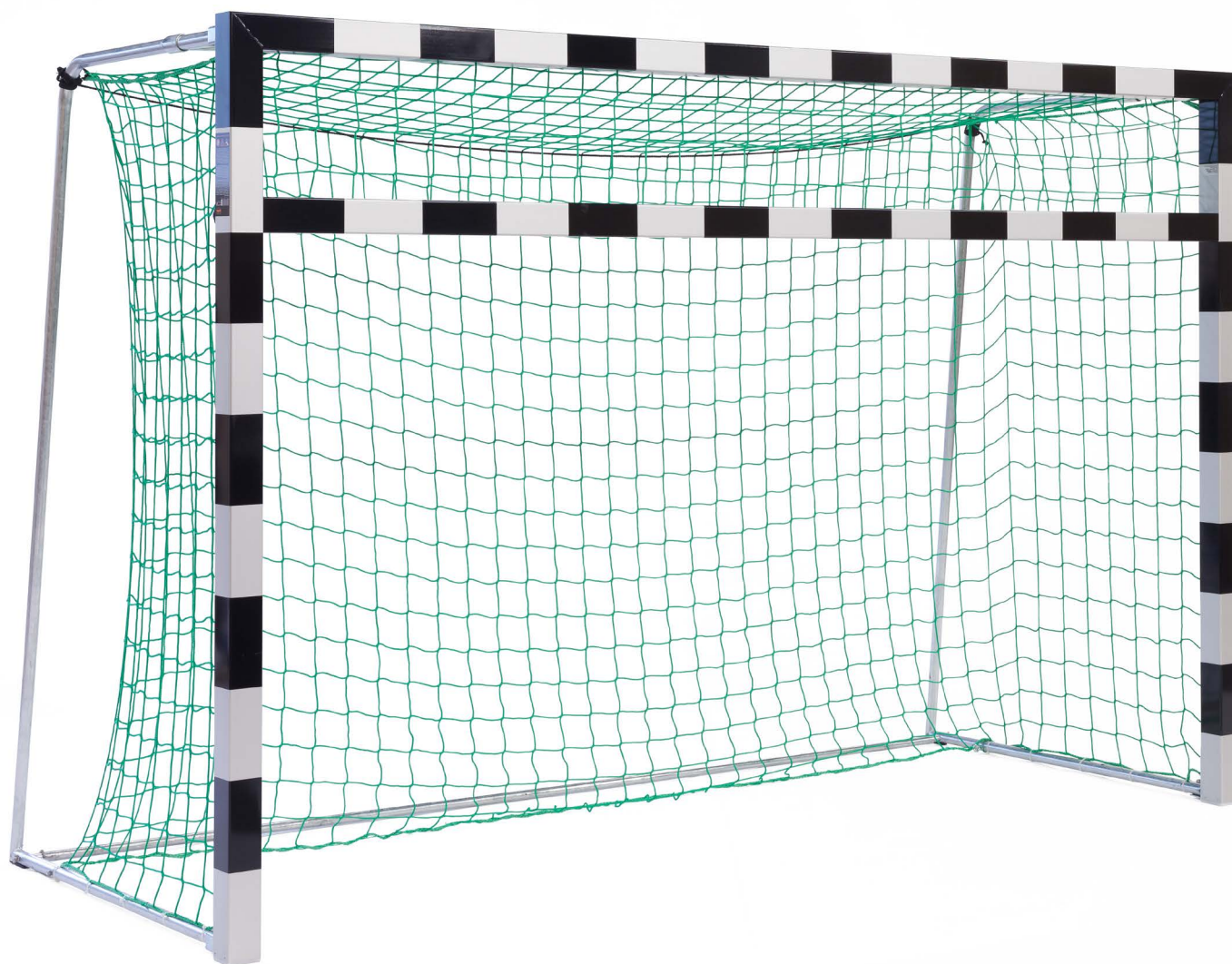


Sport-Thieme® Additional bar

Thank you very much for choosing a Sport-Thieme product!

Please read the instructions fully before you assemble the equipment, so you can enjoy the product and safety is guaranteed. We are happy to answer any questions you may have.



1. Scope of delivery

Please check the following content before assembly.

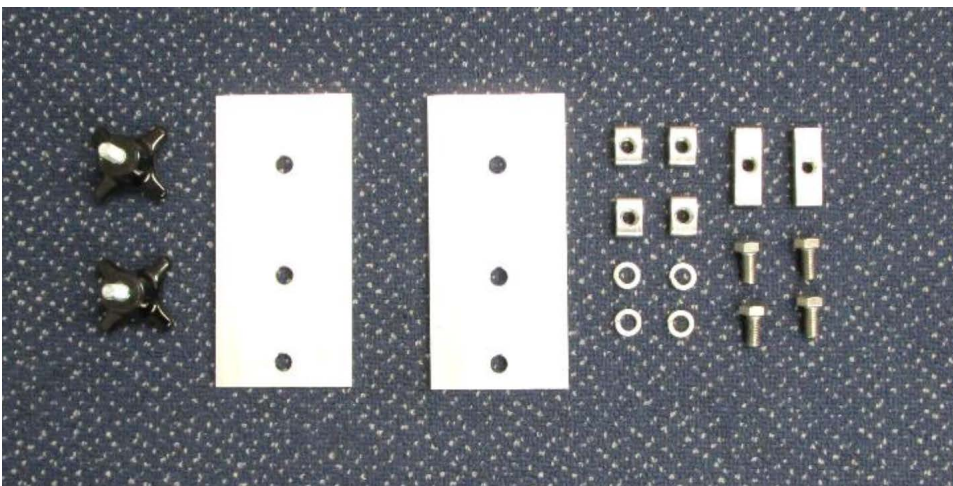
The following indicated quantities refer to 1 goal. In case of a delivery in pairs we double the amount correspondingly. Pictured colours of profiles are only samples and may differ from delivered profiles.

Advice: This additional bar is suitable for all Sport-Thieme Handball goals of 3.00 x 2.00 m.



Contents:

- 1x Additional bar, profile 80 x80
- 1x Accessories



Accessories:

- 2x Hand wheel
- 2x Aluminium plate with 3 holes
- 4x Nut 20 mm, M8
- 2x Nut 40 mm, M8
- 4x Hexagon socket screw M8 x 16, DIN 933
- 4x Spring washer A8, DIN 127
- 1x Assembly instruction

Assembly instructions for Art.-Nr. 113 3400

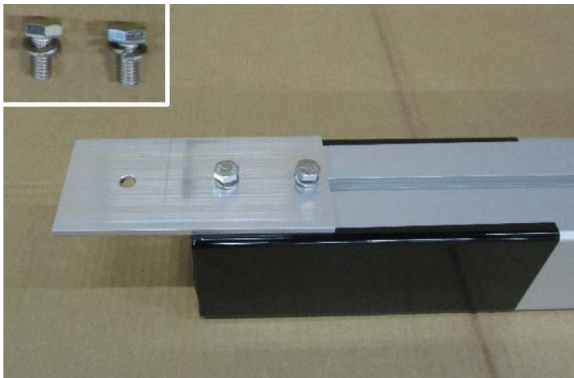
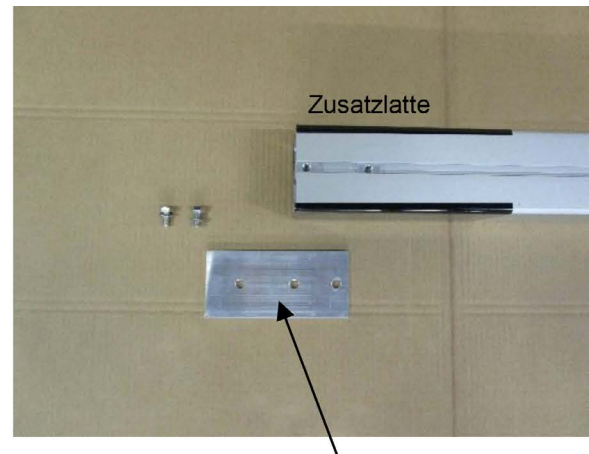
2. Assembly of additional bar

The following tools are necessary:

- 1 wrench/ring spanner 13 mm
- 1 assistant

a) Assembly of aluminium plates:

Lay bar on the ground with groove facing upwards. Push at each side 2 nuts 20 mm, M8 into the groove (see picture bottom left). To mount the aluminium plates stick spring washers A8, DIN 127 on hexagon socket screws DIN 933, M8 x 16. Place at each bar end 1 aluminium plate (consider the arrangement of holes, see picture bottom right). Adjust nuts with holes of plates.

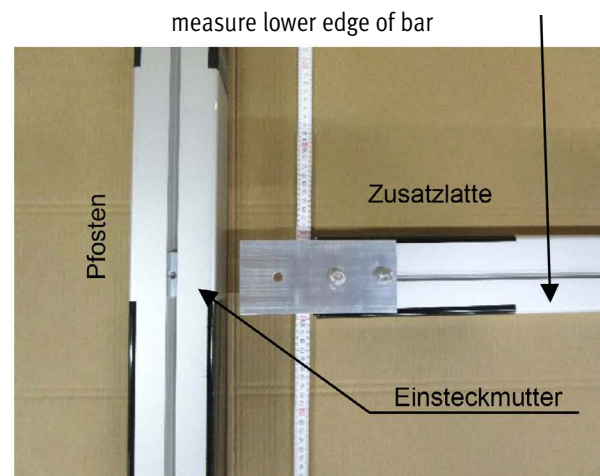
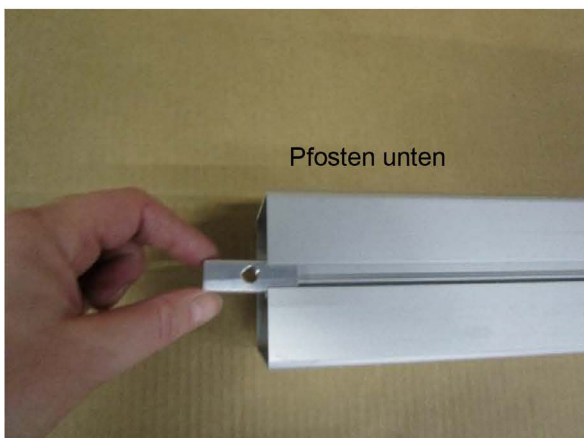


consider the arrangement of holes in the plate during assembly

Join plates with nuts and screw slightly already prepared hexagon socket screws including spring washers. Take care that plates can still be pushed while fixing the bar at uprights (see bottom picture).

b) Preparation of uprights:

Insert nuts 40mm, M8 at the bottom of both uprights (see picture bottom left). If necessary remove uprights' caps or net hoop supports. Now measure and fix the installation height of the additional bar (example: for junior Handball goals the height is 1.60 m from lower edge of bar to upper edge of floor). Push nuts around the installation height of the bar (see picture bottom right).



c) Fixing of bar at uprights:

Place bar between the uprights at measured height.
Adjust holes of aluminium plates and nuts (see bottom picture).

Fix additional bar with hand wheels (see pictures bottom left and right). Then tighten hexagon socket screws already mounted at the bar (see picture bottom right). Finally fix again removed or unscrewed parts at the bottom of uprights.



d) Dismantling of additional bar:

unscrew hand wheels at both sides and remove the bar.

3. Maintenance and safety instructions



Before use of the additional bar pay attention to the corresponding safety instructions of the goal and the warning sticker at the goal!

Check screwed fastenings regularly and change damaged and wearing parts if need be. The unit should be maintained once a year by skilled personnel.

Notice: Due to our continuous quality check of products and equipment technical modifications are possible.

To avoid damage and misuse goals have to be stored secured and in an upright position when not in use.

Only use water for cleaning the surfaces. Do not use alcohol or any aggressive chemicals!