

INTRODUCTION

Congratulations on buying an inflatable Gladiator SUP board!

Gladiator is a brand for the full cycle of SUP board production. The company was founded in 2009. Every day we work to make our models fancy looking, convenient and reliable, that allows the owners to use them for years.

Gladiator SUP boards are being manufactured at our own Weihai BS Marine co ltd. factory, located in Weihai city of China. As owners of production we

control all the manufacturing processes to the last detail and create SUP boards deservedly popular.

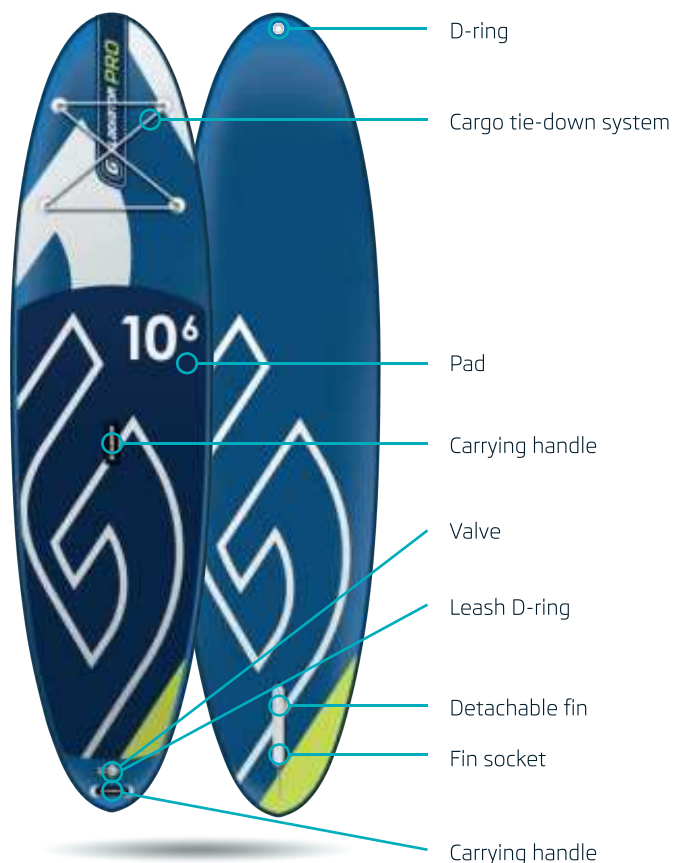
Today TM Gladiator enjoys over 300 partners all over the world.

Visit us online:

www.instagram.com/gladiatorsuprussia
www.facebook.com/gladiatorsuprussia
www.gladiatorsup.com

SUP SETUP*

*based on PRO series



STANDART EQUIPMENT*

*based on PRO series



Carrying bag
Knock-down paddle
High pressure pump
Leash
Detachable fin
Repair kit

PRODUCT SERIES & SETS

KIDS, LIGHT, RENTAL

positions marked by* are not included in the Rental set.



Carrying bag*
Aluminum knock-down paddle*
Double-action pump*

Basic leash
Detachable fin
Repair kit

PRO, PRO Design, ART



Wheeled bag
Knock-down carbon paddle with fiberglass blade
Italian double-action pump

Convenient hinged leash
Detachable fin
Repair kit

ELITE

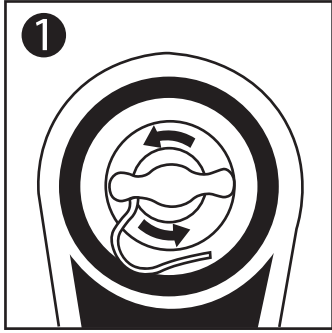


Wheeled bag
Full carbon knock-down
Italian double-action pump with a manometer

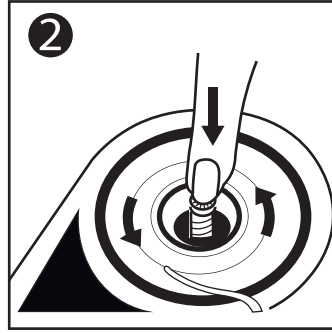
Convenient hinged leash
Detachable fin
Repair kit

INFLATING & DEFLATING YOUR BOARD

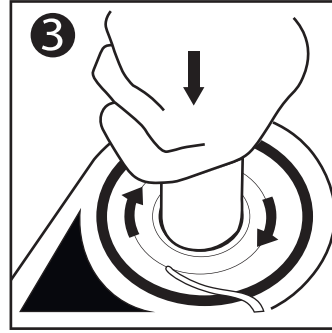
To inflate your board use the pump provided and follow the instructions below.



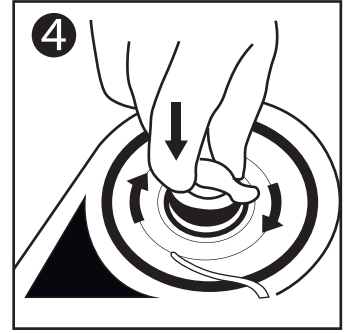
Release the valve cover by twisting counter - clockwise. Ensure the valve is clear from debris sand, or dirt before releasing.



Push valve button in and turn counter - clockwise 90° so it pops up. Connect the pump hose to the pump on "OUT" mode.



Insert the pump hose and twist it 45 degrees clockwise to lock in place. Inflate until you reach the required pressure (20-22 PSI Min - 26 PSI Max).



After inflation, return the valve cover and tighten in clockwise direction to lock in place.

PUMPING TECHNIQUE

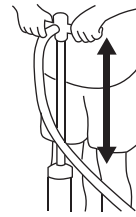
To inflate faster and easier, follow the techniques below.



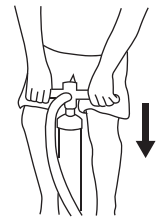
Use the **DOUBLE ACTION** position to pump the board up to **7 psi**.



Switch to use the **SINGLE ACTION** position to pump the board up to **15-22 PSI**.



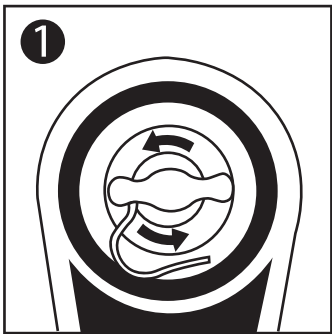
Using the full range of the pump cylinder helps to inflate faster, while keeping your arms extended helps to reduce efforts pumping.



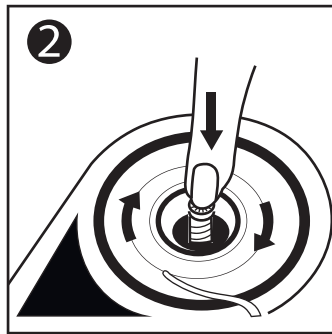
Bending your knees makes more powerful inflating.

Using the body weight helps to reduce effort.

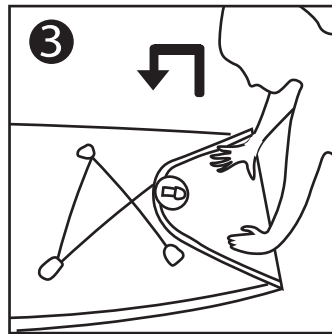
To deflate your board, follow the instructions below.



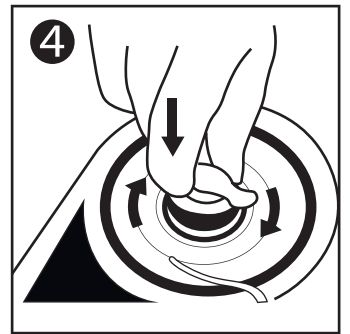
Release valve cap by twisting counter - clockwise.



Push valve button in and turn clockwise to lock it in **DOWN** position to deflate.



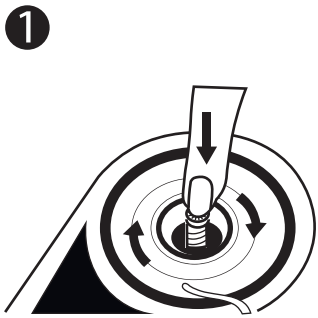
Fold up your board from the nose to the tail of the board, pushing all air out, or using pump on "IN" mode to help deflating faster.



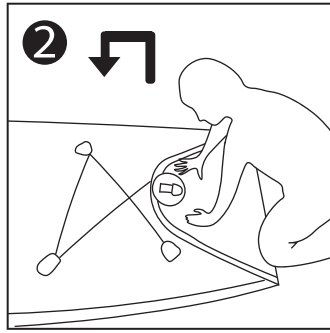
Press all air out of the board, return valve cover, and tighten in clockwise direction to lock in place.

HOW TO PACK YOUR BOARD & EQUIPMENT

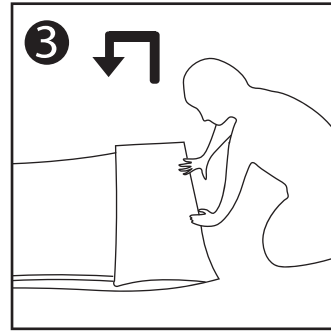
PACK THE BOARD INTO THE BOARD BAG



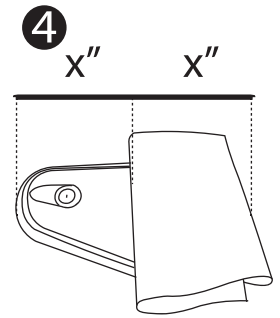
1 Release air.



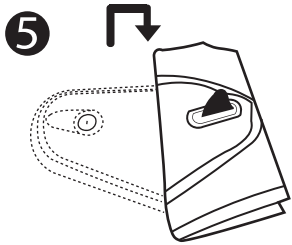
2 Start to fold from the nose of the board.



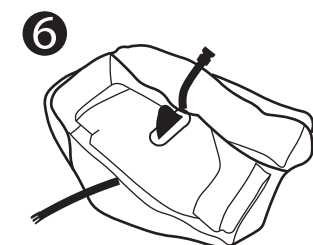
3 Continue folding, to the tail of the board.



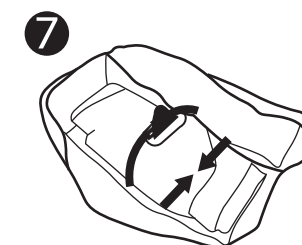
4 Each fold should be approximately as long as the length of your board's fixed fins/fin box.



5 The final fold should have the fixed fins / fin box completely on top of the other folds.

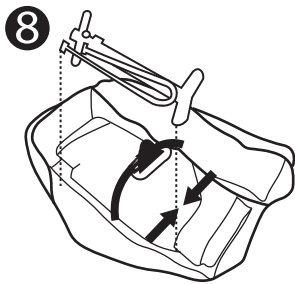


6 Place the board in the bag with the fins on top.



7 Secure your board with the compression belt.

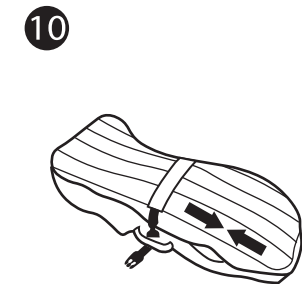
PACK THE EQUIPMENT



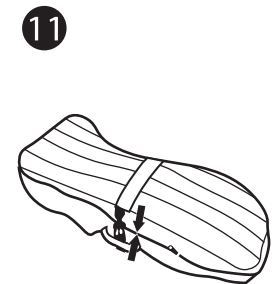
8 Place the pump on the side of the board.



9 Keep small equipment in the mesh pocket.



10 Zip shut with zippers.



11 Connect the compression belt to reduce pressure on the zipper.

Warning: Boards may deflate over time (up to 4 PSI in 7 days), be sure to check that your board is fully inflated before paddling.

ALWAYS WEAR A LEASH.



Q: How much air should I pump into my board, and how long does it take to inflate?

A: The recommended pressure is 15- 18 PSI, any higher you risk over inflating and damage. Depending on the size of your board it can take anywhere from 5-8 min.

Q: When detaching the pump from the board, the air starts to release from the valve. How do I stop this from happening?

A: The air is releasing as the valve spring pin has been left in the deflating position. Simply push down and turn the pin until it lifts up into the inflation position and stops air from releasing; continue to inflate the board until up to pressure.

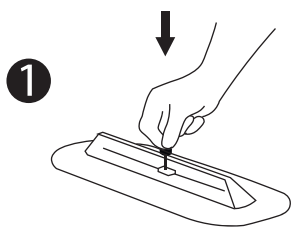
Q: How far do I tighten the screws on the fins?

A: Do NOT over tighten the screws. Only tighten until the fins feel snug and secure in the box.

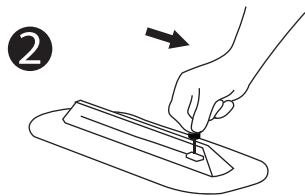
GLADIATOR

FIN INSTALLATION

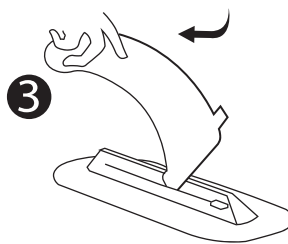
CENTER FIN WITH HANDY SCREW



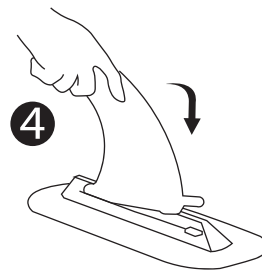
1 Use the handy screw to place the washer into the fin box.



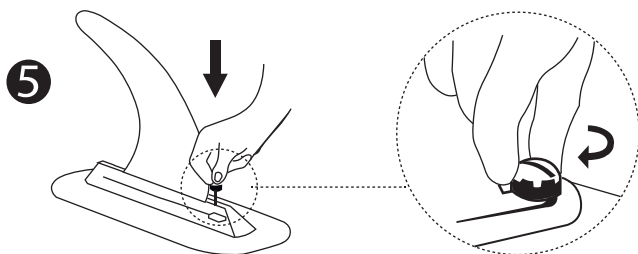
2 Slide washer to the front of the fin box and remove the handy screw.



3 Align the fin base into the fin box slot and slide it to rear of the fin box.



4 Align the fin base into the fin box slot and slide it to rear of the fin box.



5 Insert the handy screw and secure firmly by screwing in clockwise with your fingers.

PRECAUTION & TIPS

Electric Pumps can be used to inflate board up to 80-90%. However, the remaining pressure required should be achieved using the hand pump to avoid over-inflation.

Do not use air compressors as this voids warranty of board.

Before long trips, ensure the board has been inflated and has maintained pressure for a minimum of 24 hours.

WARRANTY CERTIFICATE

Full name of the product

Serial number _____

Date of sale _____

Owner (full name)

I read and understood this instruction (full name, signature)

MAINTENANCE TIPS



EASY CLEANING

Clean the board after use with fresh water and mild soap.



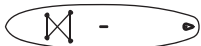
KEEP IT DRY

Dry the board off after use and before storing to avoid mildew and mold damage.



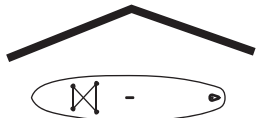
AVOID DIRECT SUNLIGHT

When leaving the board inflated in direct sunlight, deflate it to at least 10 PSI.



STORE AT ROOM TEMPERATURE

Keep the board sheltered away from high temperature and humidity.



DEFLATING BEFORE STORING

Releasing a few PSI just in case your storage becomes too warm, which could damage the seals of the board.



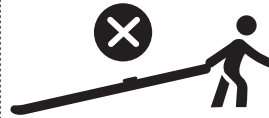
USE IT FREQUENTLY

Long-term storage can cause glue bonds to disintegrate.



BE CAREFUL NOT TO USE COMPRESSOR

Air compressors can damage your board and void the warranty.



NO DRAGGING

Sharp debris can puncture your board, so don't drag it.

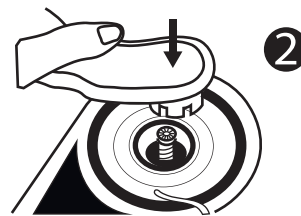
HOW TO TIGHTEN THE VALVE

Чтобы надуть доску, используйте насос, входящий в комплект, и следуйте ниже приведенным инструкциям.

VALVE WRENCH



Deflate the board.



Grip the wrench to the valve.



Turn it clock-wise to tighten the valve.

Q: Can I leave my board inflated in the sun and over night?

A: If leaving the board inflated, it is best to remove from direct sunlight and deflate the board at least to 10 PSI.

Q: How should I clean and how should I store my board?

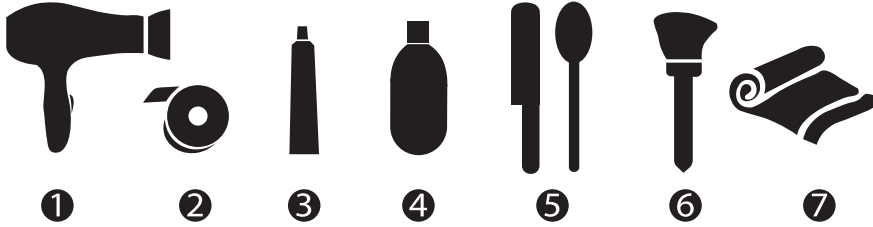
A: We only recommend water and a mild soap. Heavy detergents and solvents can damage your board. It is best to clean and dry your board, take out the fins, roll it up and put in the Inflatable bag.

Q: If I puncture my board, can I repair by myself?

A: Yes, you can use the supplied Inflatable repair kit we recommended Aquaseal® or Email us for more information at info@gladiatorsup.com.

REPAIRING YOUR BOARD

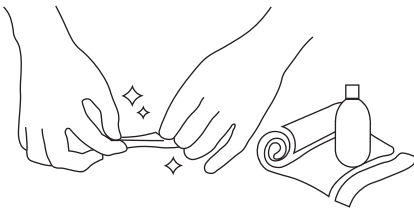
SUPPLIES REQUIRED



1. HAIRDRYER
2. TAPE
3. GLUE FROM REPAIR KIT (Aquaseal® is recommended)
4. ACETONE OR METHYL ETHYL KETONE (M.E.K.)
5. SPATULA OR SPOON
6. BRUSH
7. TOWEL

1 SURFACE PREPARATION

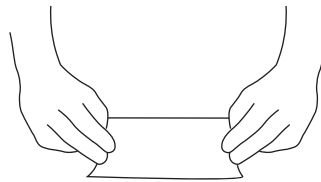
Clean the area around the cut or puncture using acetone or M.E.K.



2 PREPARING THE PATCH

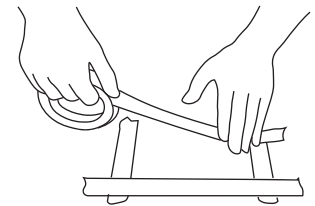
Draw the outline of the patch using chalk or pencil (do not use ink).

Cut the patch, cover the cut or puncture with Approximately 2.5 cm (1") overlap on all sides.



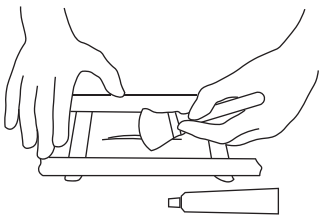
3 PREPARING THE BOARD

Apply tape along the outline of the patch. This will prevent the glue from spreading outside the patch area.



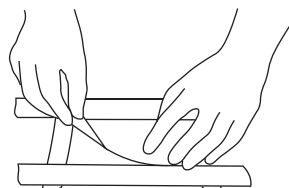
5 THE GLUE

Apply glue on both the board and patch using a brush or other applicator. Make sure the glue is spread evenly and completely over the board and patch. Let the glue dry for 5 minutes.



6 APPLYING THE PATCH

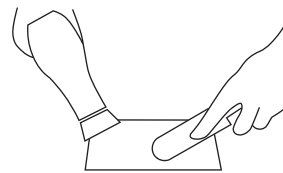
Apply the patch starting on one side and moving towards the other side being careful not to trap any air bubbles.



7 BONDING THE PATCH

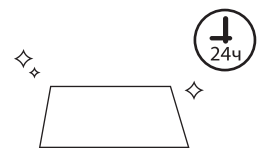
Use a hair dryer to gently heat the area to ensure a good bond between the patch and the board.

Use a metal spatula or spoon and firm pressure to ensure a good bond and to work out any air bubbles.



8 CURING THE PATCH

Allow the glue to cure with the board un-inflated for 24 hours prior to use.



GLADIATOR

OPERATION AND STORAGE
INSTRUCTION
FOR INFLATABLE SUP BOARDS

